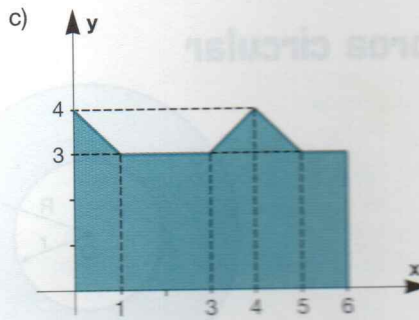
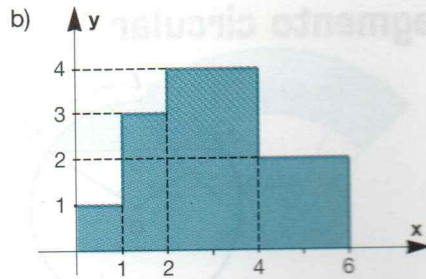
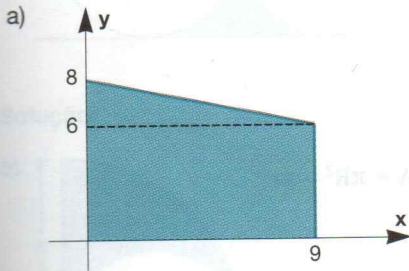


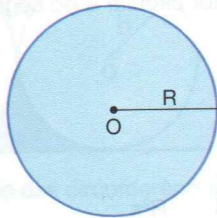
7. Calcule a área de um triângulo equilátero cuja altura mede  $2\sqrt{3}$  cm.
8. Calcule a área de cada superfície colorida.



## 2. Círculo e suas partes

Vamos agora ver as fórmulas da área do círculo e de suas partes.

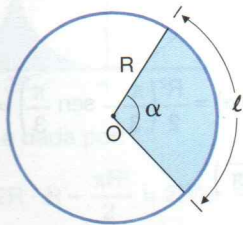
### Círculo



$$A = \pi R^2$$

Se  $C$  o comprimento da circunferência, temos  $C = 2\pi R$ .

### Setor circular



$$A = \frac{R^2 \alpha}{2} \quad (\alpha \text{ em radianos})$$

$$A = \frac{lR}{2}$$